

Shark Modem User Guide

(rev 10.22.08)

Table of Contents

- 1.0 - Shark Modem Blackberry Application Installation
- 2.0 - Configuring The Blackberry Shark Modem application
- 3.0 - Shark Modem Proxy Configuration
- 4.0 - Configuring Proxy Settings
- 5.0 - Proxy auto detection settings
- 6.0 - Configuring Instant Messenger Programs
- 7.0 - Configuring Email Clients
- 8.0 - Configuring Bluetooth Blackberry to use The Shark Modem

1.0 Blackberry Application Install

Step 1.

- 1) Download The Shark Modem Application:
http://www.mobishark.com/SharkModem_v2.0.zip
- 2) **Shark BlackBerry Application (via OTA):** via your blackberry handheld browser. Note: The url below is case sensitive.
<http://www.mobishark.com/ota/SharkModem.jad> (you may load this BlackBerry application portion via the BlackBerry Desktop Manager also. Please see the following directions.

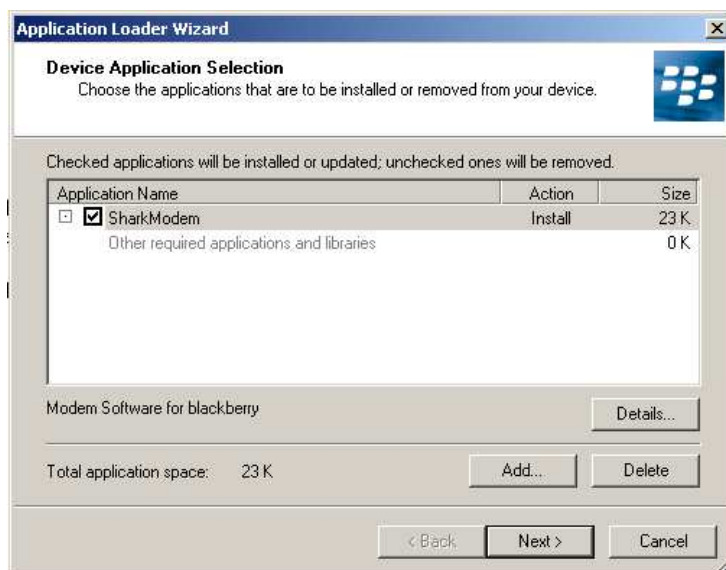
Shark BlackBerry Application (via BlackBerry Desktop Manager):

After you have downloaded The Shark Modem Application you will need to extract the zip file. Once you have extracted the zip file, you will see a **BlackBerry** folder. There will be two files in this folder named: SharkModem.alx and SharkModem.cod.

Note: When using Shark Modem it is not necessary to run the BlackBerry Desktop Manager software.



Step 2. Choose the “Application Loader” option. A dialogue box will appear:



Step 3. Click on the “Add” application button, then browse to the directory where you stored **The Shark Modem** files in Step 1. Select the appropriate application file with the .ALX extension and click on the next button. The BlackBerry Desktop Manager will proceed with the installation of the application on your Blackberry.

Note: If you get the message “**No Additional Applications designed for your device were found**” Handheld portion - can be downloaded via OTA (Over the Air) via your bb handheld browser with the URL below.

***The URL below is case sensitive. <http://www.mobishark.com/ota/SharkModem.jad>

Step 4. From the Blackberry home screen, use your track wheel to highlight and run (click/open) the Shark Modem applications icon.



Step 5. The first time that you start The Shark Modem Application on your Blackberry device, you "may" see the following message box:

***" The application Shark Modem has requested a comm connection to USB. Don't ask this again for – All comm. connections
- Comm connection to USB"****

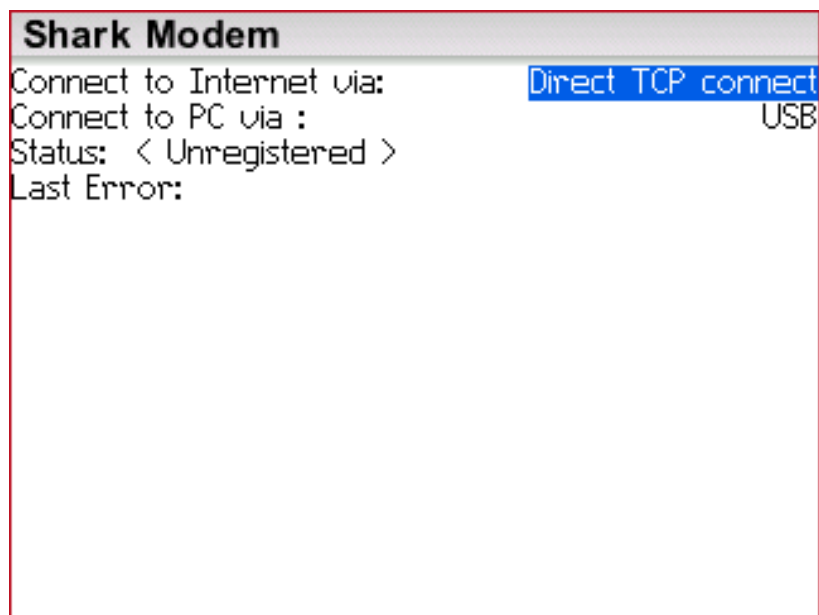
Please ensure that you Select "Comm connection to USB" option and click: **"Allow this connection" button. Note: This step is VERY important.**

*** If you don't see this prompt it will appear later during the use of application when data transfer begins.**

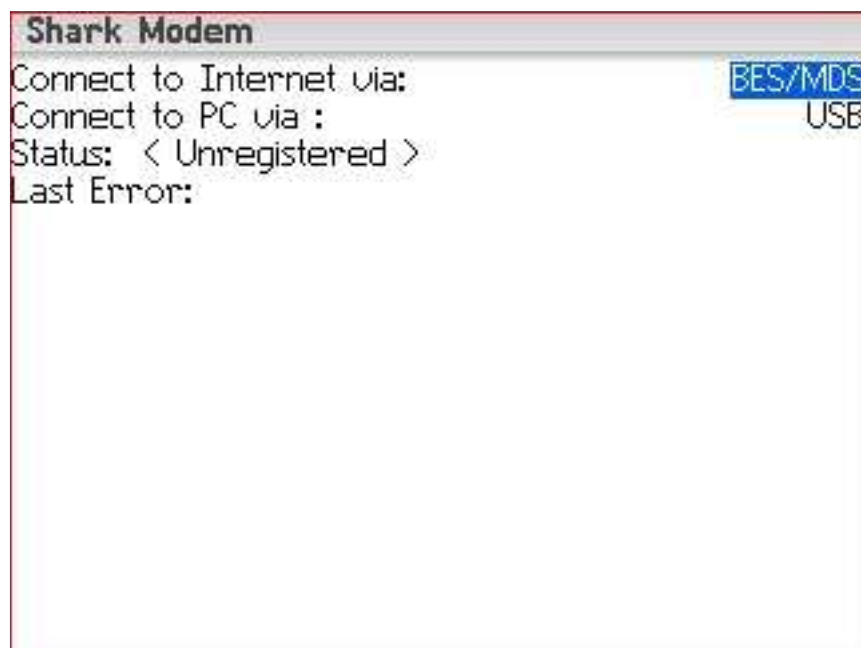
Step 6. Select the "Direct TCP connect" option if you are connecting via your Carriers gateway (Please note that for some carriers you need to have APN settings (Options -> TCP settings): This option is the average BlackBerry User that has a BlackBerry Internet Service account.

*** To verify if you carrier requires APN settings, please see the following site > [APN Verification Tool](#)

If during the use of the application later on you get the error message **"Open Tunnel Failure"** on the Shark Modem BlackBerry application on the third line listed " LAST ERROR", this means that your APN settings are incorrect. Please verify your settings via the [APN Verification Tool](#).



or select "BES/MDS" option if you are using Blackberry Enterprise Server: This option is for BlackBerry users that have company owned/3rd party BlackBerry Enterprise Servers services.



1.1 Laptop installation

Run Setup.exe from The Shark Proxy directory/folder and install Shark Proxy on your laptop. When the installation is complete, start the program by clicking Start > Programs > SharkModem. On start-up the application is automatically minimized to the Windows tray area (please see the demo picture below)



As soon as you hook up the USB cable and start the application on blackberry, this icon will change to the one shown below.



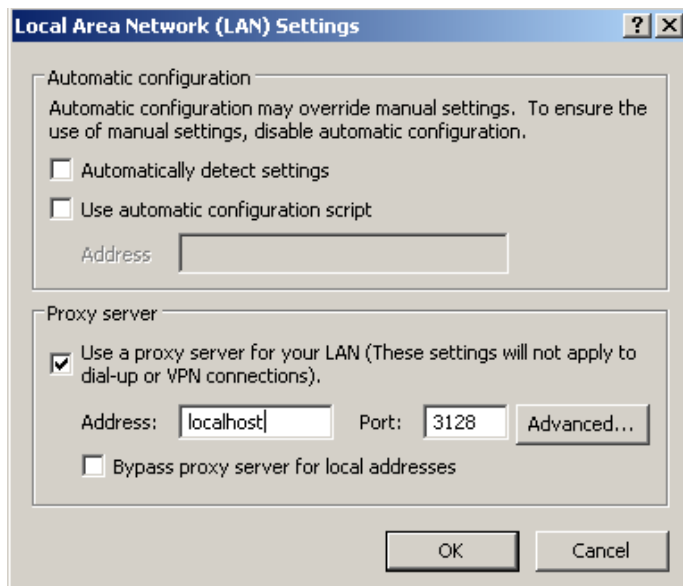
1.2 In order to access the Internet, you should specify proxy settings in the settings of each program you intend to use:

Proxy Server Name/Address: localhost or 127.0.0.1
Proxy Port: 3128

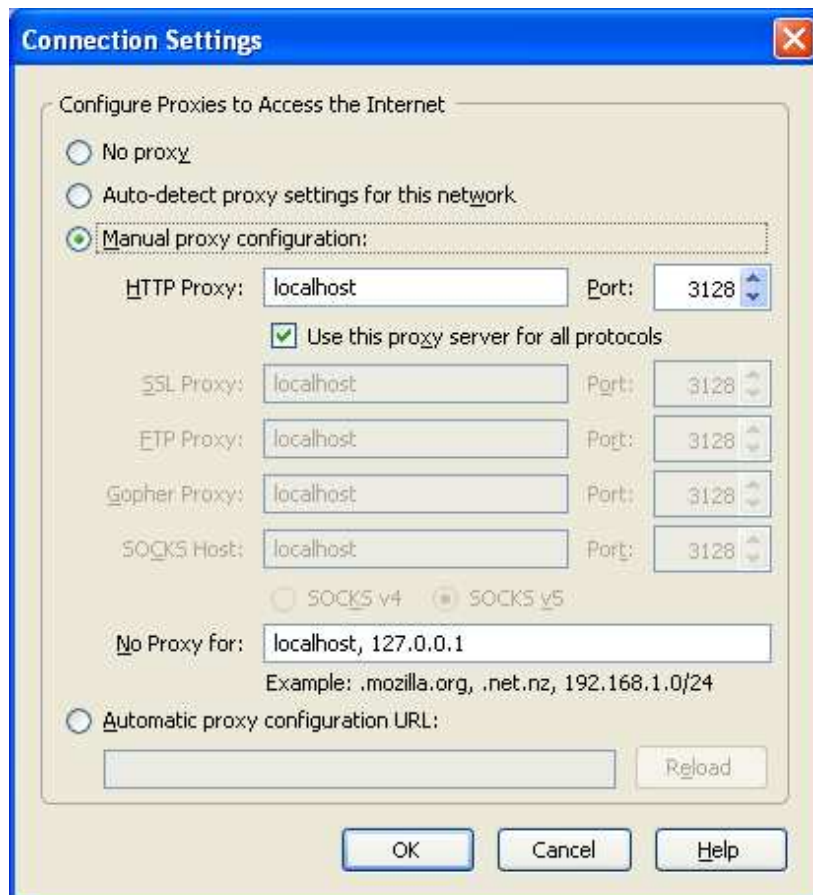
For example: In **Internet Explorer Browser** select Tools > Internet Options. > Connections > LAN settings:

When using Internet Explorer make sure that you do not have selected "AUTOMATICALLY DETECT SETTINGS" (show screen below)

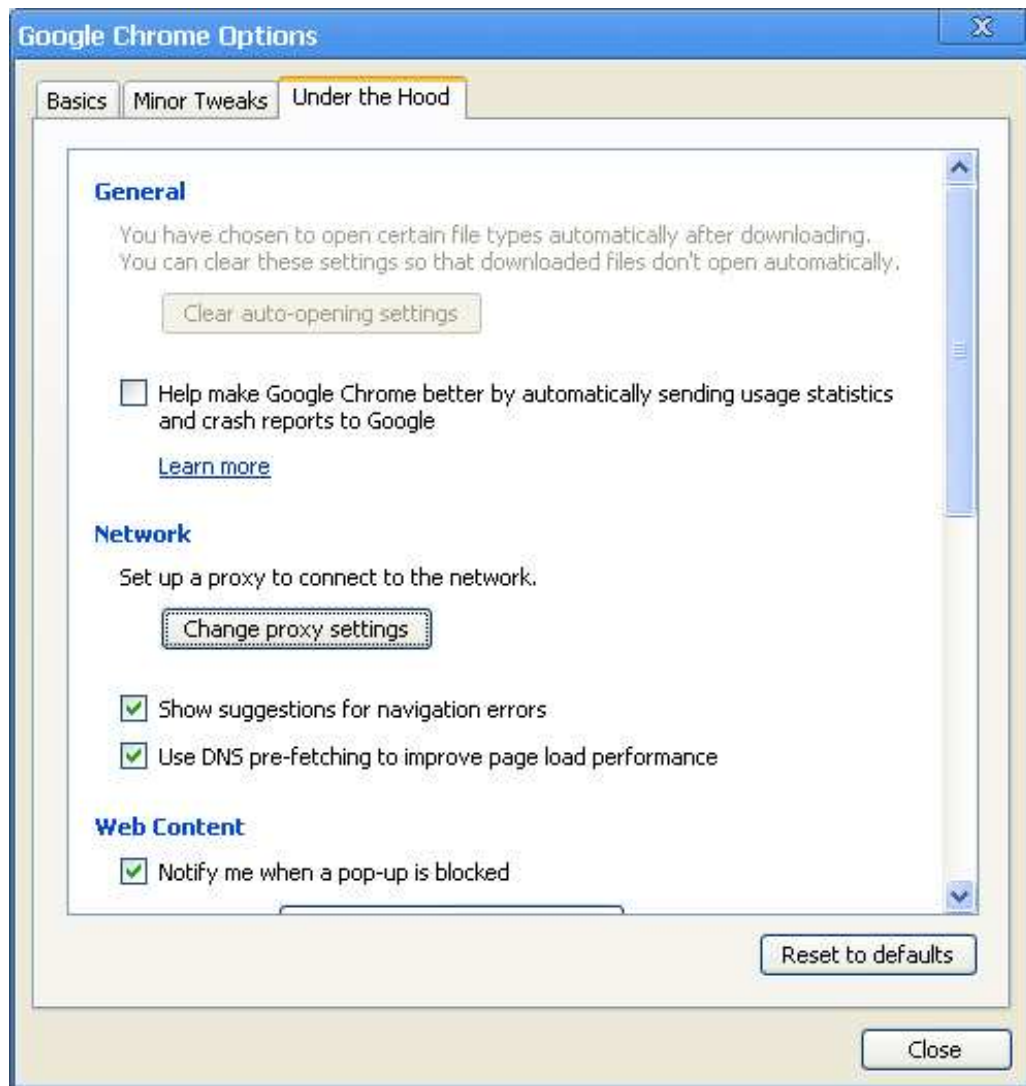
Note: We suggest using [Firefox](#) or [Google Chrome Browser \(BETA\)](#) with the use of Shark Modem. These browsers appear to work better in our opinion.



Firefox Browser Settings: select Tools > Options > Advance > Network >



Google Chrome Browser Settings: select Tools > Under the hood > Network /Change Proxy Settings (Google Chrome uses the same proxy settings as Internet Explorer) Click LAN settings.



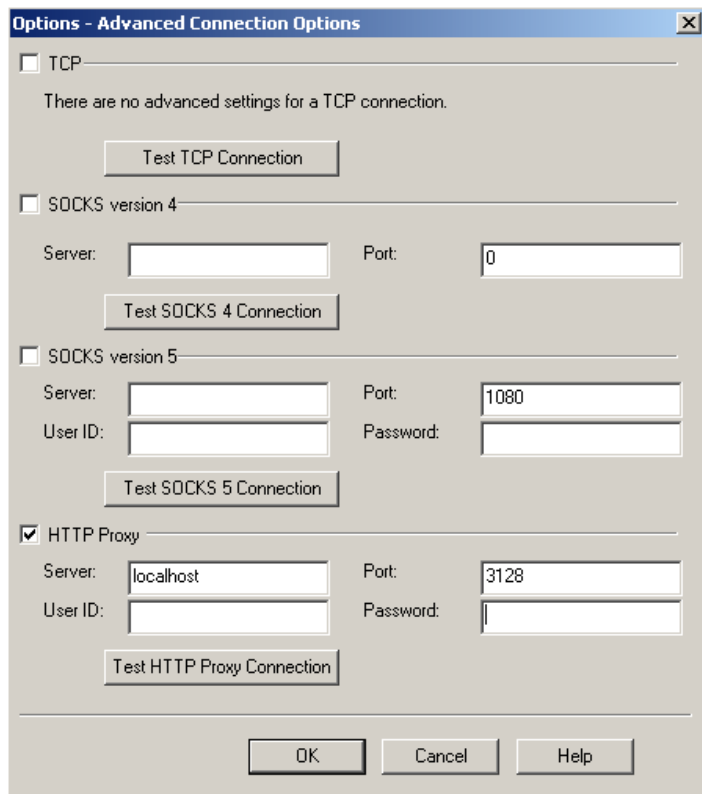
Proxy auto detection settings:

Please note: Shark Modem v2 is auto configured to communicate with the Shark Proxy without changing your Internet Browser settings each time. This is useful when you would like to automatically connect to the Internet via standard LAN at work or home.

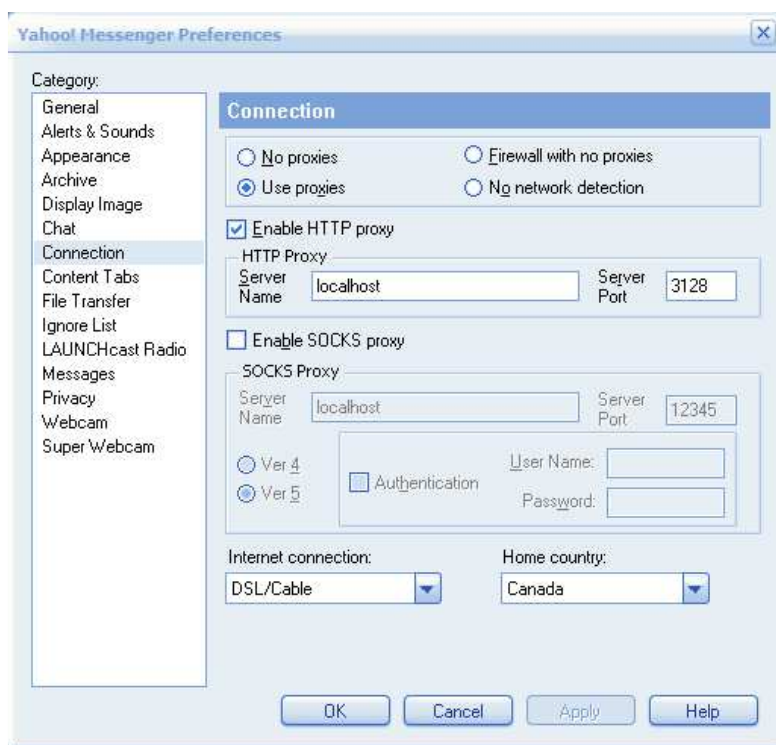
You will need to start The Shark Modem application on blackberry, and it will automatically connect via the Blackberry. If the Shark Modem application is connected (running) then your laptop will be able to make regular connections to the Internet without having to change your Internet Explorer Address and Port settings.

**** Note: This may not work for all users. We are still researching this issue as to why this isn't working for all users. If this does not work for you, please continue to change your browser settings. **TIP: We also suggest that users install a second browser that will allow users to configure a browser that they only use with Shark Modem.**

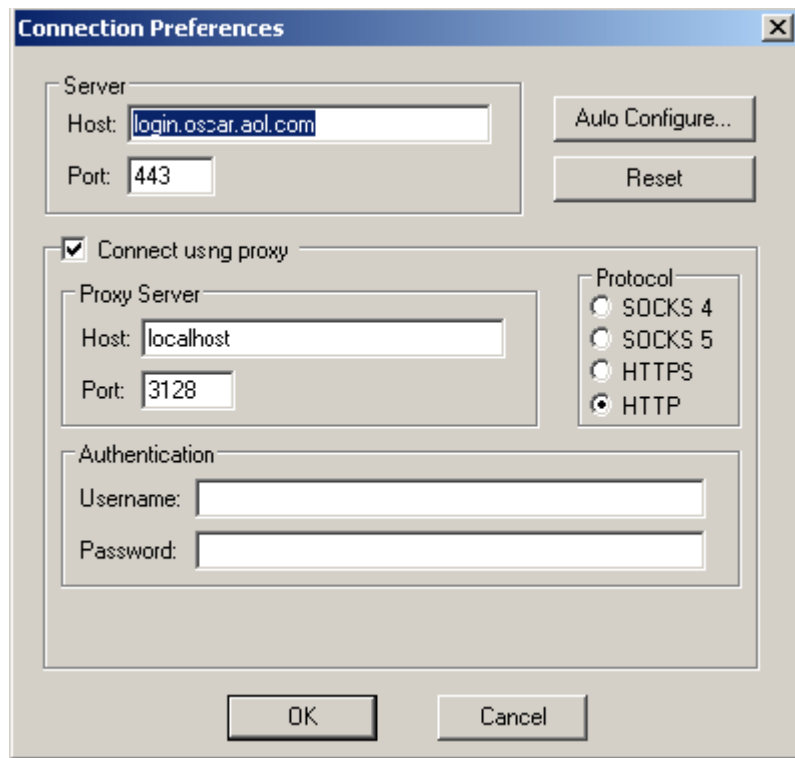
In MSN messenger select Tools > Options > Connection > Advanced Settings:



In Yahoo messenger select Messenger > Preferences > Connection tab:



In AOL instant messenger select Setup > Sign on/off > Connection tab



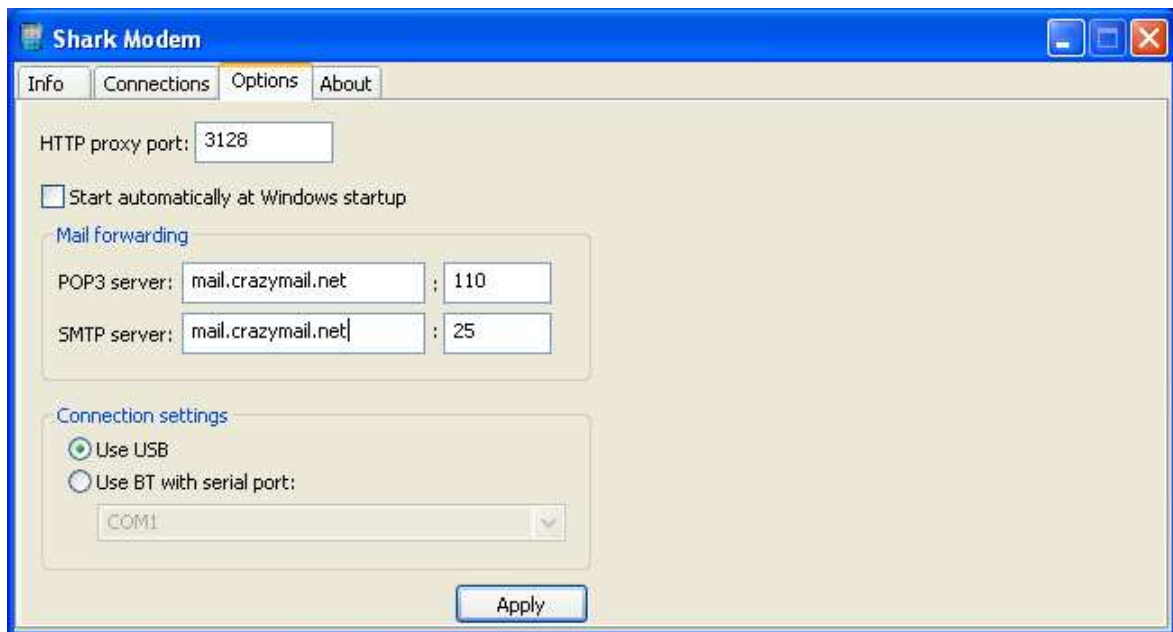
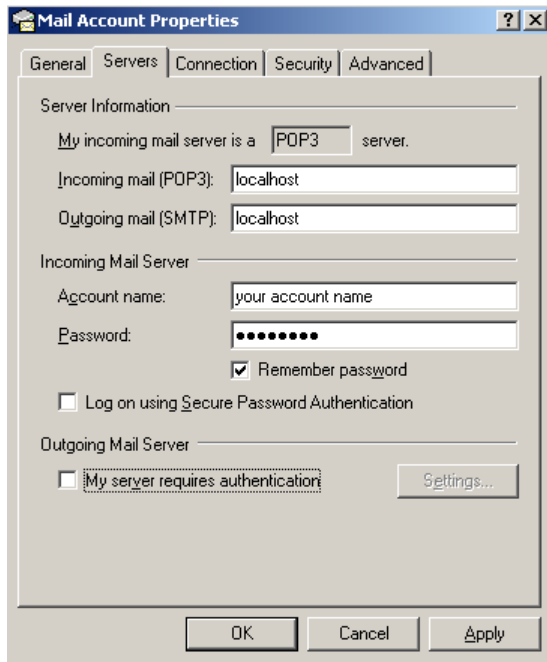
Now you can get access to the Internet using these programs through the Shark Modem Application. Note: Please remember to disconnect any active Connection you have (Example - DSL, Cable Modem. etc)
When data is being transferred (arrows your BlackBerry showing as if data is being transferred), the application icon will keep flashing, and the counters will automatically change to display the numbers of bytes being sent and received.

To ensure that you have Outlook configured to works with Shark Modem please see the following steps.

1. Go to Email Accounts section of the Outlook/Mail Client
2. Find where it says "POP and SMTP" servers. (Please write the name of theses servers down)
3. Next replace the server names for the POP and SMTP with the word localhost
4. Save the Mail Account Profile
5. Locate the Shark Modem Proxy Application on your Computer and go to the options tab and put the POP3 and SMTP Servers that you wrote down from your mail client in the space provide. The port number should be okay. Please verify that the ports are the same as the ports in your Mail Account.

PLEASE CLICK THE APPLY BUTTON BELOW ON THE SHARK PROXY. If you don't click the APPLY button, the changes will not take place.

6. You are ready to test the Shark Modem using your Outlook/Mail client.

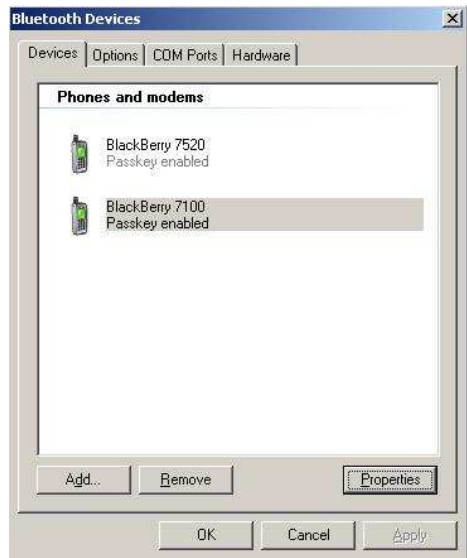


=====

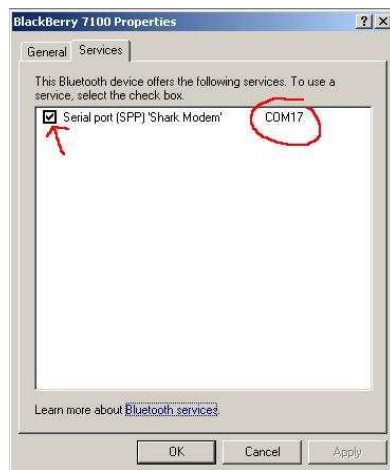
Bluetooth

If you want to utilize your Blackberry as modem via **Bluetooth**

1. Run Shark Modem on blackberry, select "Connect to PC via Bluetooth" and restart the application.
2. Discovery handheld on PC and click "Properties" button.



3. Select "Serial port (SPP) Shark Modem" checkbox and remember COM port number (COM17 for attached screen shoot)



4. In Shark Modem "Options" tab, select "Use BT with serial port" option and then select COM port number equals COM port number from "Properties" (see previous picture) and click "Apply".

Enable access to HTTP and Socket connections for SharkModem if you use a firewall on your device.

Notes:

The trial version has a 10 MB limit.

Thank you for trying our product!

The Shark Team

www.mobishark.com/shop (Mobile Application Store)

www.mobishark.com/helpdesk (MobiShark HelpDesk)

www.geekshark.com (BlackBerry Development Studio)